

Severs Series

JR-DS-02



IP Dispatching Console/Master Station

- Processor: Onboard Intel I3 processor(I5/I7 as request)
- Chipset: Intel Soc chipset integrated into the CPU
- Internal storage: 4G DDR3 memory
- Storage:128G solid state drive or above
- Hardware detection: CPU, system temperature, fan speed and voltage monitoring
- With 10.1-inch capacitive touch screen
- Built-in 200W Camera

NEW

JRPBX



High-definition sound quality: Supports standard broadband voice coding, combined with unique echo cancellation technology, compared with traditional PCMA coding, it can be called fidelity and high-definition sound quality.

Order Code

- JRPBX-T20
- JRPBX-T50
- JRPBX-T100

NEW

JRPBX



High-definition sound quality: Supports standard broadband voice coding, combined with unique echo cancellation technology, compared with traditional PCMA coding, it can be called fidelity and high-definition sound quality.

Order Code

- JRPBX-T200
- JRPBX-T500
- JRPBX-T1000

JRTNS



IP Sever with intercom function, broadcast function, video function, alarm linkage, electronic map

Order Code (Open API, \$700 added)

- JRTNS-T60 (60 Terminal registration capacity)
- JRTNS-T120 (120 Terminal registration capacity)
- JRTNS-T240 (240 Terminal registration capacity)
- JRTNS-T500 (500 Terminal registration capacity)
- JRTNS-T1000 (1000 Terminal registration capacity)

Weatherproof Telephones

JR101-FK



Weatherproof Telephone, Full keypad, Yellow color(other colour on demand), Wall-Mounting

Housed in a weatherproof cast aluminium enclosure, IP66~IP67

Order Code

- JR101-FK-AL (Analog model)
- JR101-FK-SIP (SIP/VoIP model)
- JR101-FK-4G (4G model)

JR101-FK-L



Weatherproof Telephone, Full Keypad, with LED lamp fixed on the top, Wall-Mounting, Yellow color(other colour on demand)

Housed in a weatherproof cast aluminium enclosure, IP66~IP67

Order Code

- JR101-FK-L-AL (Analog model)
- JR101-FK-L-SIP (SIP/VoIP model)
- JR101-FK-L-4G (4G model)

JR101-CB



Weatherproof Telephone, CB(hot line), Yellow color(other colour on demand), Wall-Mounting

Housed in a weatherproof cast aluminium enclosure, IP66~IP67

Order Code

- JR101-CB-AL (Analog model)
- JR101-CB-SIP (SIP/VoIP model)
- JR101-CB-4G (4G model)

JR101-CB-L



Weatherproof Telephone, Hotline Phone, with LED Lamp, Yellow color(other colour on demand), Wall-Mounting

Housed in a weatherproof cast aluminium enclosure, IP66~IP67

Order Code

- JR101-CB-L-AL (Analog model)
- JR101-CB-L-SIP (SIP/VoIP model)
- JR101-CB-L-4G (4G model)

JR101-3B


Weatherproof Telephone, 3 buttons for speed dial, Yellow color(other colour on demand), Wall-Mounting

Housed in a weatherproof cast aluminium enclosure, IP66~IP67

Order Code

- JR101-3B-AL (Analog model)
- JR101-3B-SIP (SIP/VoIP model)
- JR101-3B-4G (4G model)

JR102-SC


Weatherproof Telephone, Speed dial, Yellow color(other colour on demand), Wall-Mounting

Housed in a weatherproof cast aluminium enclosure, IP66~IP67

Order Code

- JR102-SC-AL (Analog model)
- JR102-SC-SIP (SIP/VoIP model)
- JR102-SC-4G (4G model)

JR102-2B


Weatherproof Telephone, 2 buttons for speed dial, Yellow color(other colour on demand), Wall-Mounting

Housed in a weatherproof cast aluminium enclosure, IP66~IP67

Order Code

- JR102-2B-AL (Analog model)
- JR102-2B-SIP (SIP/VoIP model)
- JR102-2B-4G (4G model)

JR103-FK


Weatherproof Telephone, Full keypad, Without door, Yellow color(other colour on demand), Wall-Mounting

Housed in a weatherproof cast aluminium enclosure, IP66

Order Code

- JR103-FK-AL (Analog model)
- JR103-FK-SIP (SIP/VoIP model)
- JR103-FK-4G (4G model)

JR103-CB

Weatherproof Telephone, CB(hot line), Without door, Yellow color(other colour on demand), Wall-Mounting

Housed in a weatherproof cast aluminium enclosure, IP66

Order Code

- JR103-CB-AL (Analog model)
- JR103-CB-SIP (SIP/VoIP model)
- JR103-CB-4G (4G model)

JR104-SC

Weatherproof Telephone, Speed dial, Without door, Yellow color(other colour on demand), Wall-Mounting

Housed in a weatherproof cast aluminium enclosure, IP66

Order Code

- JR104-SC-AL (Analog model)
- JR104-SC-SIP (SIP/VoIP model)
- JR104-SC-4G (4G model)

JR104-2B

Weatherproof Telephone, 2 buttons for speed dial, Without door, Yellow color(other colour on demand), Wall-Mounting

Housed in a weatherproof cast aluminium enclosure, IP66

Order Code

- JR104-2B-AL (Analog model)
- JR104-2B-SIP (SIP/VoIP model)
- JR104-2B-4G (4G model)

JR105-FK

Weatherproof Telephone, Full keypad, With LCD display, Yellow color(other colour on demand), Wall-Mounting

Housed in a weatherproof cast aluminium enclosure, IP66~IP67

Order Code

- JR105-FK-AL (Analog model)
- JR105-FK-SIP (SIP/VoIP model)
- JR105-FK-4G (4G model)

JR101-FK-HB



Weatherproof Telephone, Full keypad, With horn and beacon, Yellow color(other colour on demand), Wall-Mounting

Housed in a weatherproof cast aluminium enclosure, IP66~IP67

Order Code

- JR101-FK-HB-AL (Analog model)
- JR101-FK-HB-SIP (SIP/VoIP model)
- JR101-FK-HB-4G (4G model)

JR101-FK-H



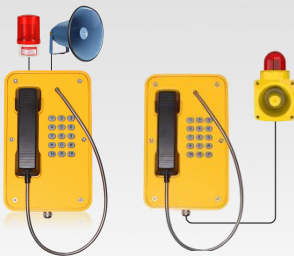
Weatherproof Telephone, Full keypad, With horn, Yellow color(other colour on demand), Wall-Mounting

Housed in a weatherproof cast aluminium enclosure, IP66~IP67

Order Code

- JR101-FK-H-AL (Analog model)
- JR101-FK-H-SIP (SIP/VoIP model)
- JR101-FK-H-4G (4G model)

JR103-FK-HB



Weatherproof Telephone, Full keypad, With horn and beacon, Yellow color(other colour on demand), Wall-Mounting

Housed in a weatherproof cast aluminium enclosure, IP66~IP67

Order Code

- JR103-FK-HB-AL (Analog model)
- JR103-FK-HB-SIP (SIP/VoIP model)
- JR103-FK-HB-4G (4G model)

JR103-FK-H



Weatherproof Telephone, Full keypad, With horn, Yellow color(other colour on demand), Wall-Mounting

Housed in a weatherproof cast aluminium enclosure, IP66~IP67

Order Code

- JR103-FK-H-AL (Analog model)
- JR103-FK-H-SIP (SIP/VoIP model)
- JR103-FK-H-4G (4G model)

JREX106-A01



Explosion Proof Telephone, Full keypad, Orange, color(other colour on demand), with door cover, Wall-Mounting

Housed in a weatherproof cast aluminium enclosure, IP66~IP67

Order Code

- JREX106-A01-AL (Analog model)
- JREX106-A01-SIP (SIP/VoIP model)

JREX106-A01-CB



Explosion Proof Telephone, Hotline, Orange color(other colour on demand), with door cover, Wall-Mounting

Housed in a weatherproof cast aluminium enclosure, IP66~IP67

Order Code

- JREX106-A01-CB-AL (Analog model)
- JREX106-A01-CB-SIP (SIP/VoIP model)

JREX106-A03



Explosion Proof Telephone, Full keypad, Orange, color(other colour on demand), without door cover, Wall-Mounting

Housed in a weatherproof cast aluminium enclosure, IP66~IP67

Order Code

- JREX106-A03-AL (Analog model)
- JREX106-A03-SIP (SIP/VoIP model)

JREX106-A03-CB



Explosion Proof Telephone, Hotline, Orange color(other colour on demand), without door cover, Wall-Mounting

Housed in a weatherproof cast aluminium enclosure, IP66~IP67

Order Code

- JREX106-A03-CB-AL (Analog model)
- JREX106-A03-CB-SIP (SIP/VoIP model)

JREX106-A04



Explosion Proof Telephone, Hotline, Orange color(other colour on demand), without door cover, Wall-Mounting

Housed in a weatherproof cast aluminium enclosure, IP66~IP67

Order Code

- JREX106-A04-AL (Analog model)
- JREX106-A04-SIP (SIP/VoIP model)

JREX106



Explosion Proof Telephone, Stainless steel full keypad(20 keys), Yellow color(other colours on demand), with LCD display

Housed in a weatherproof GRP(Glass fibre-reinforced polyester) enclosure, IP67 rating

Order Code

- JREX106-AL (Analog model)
- JREX106-SIP (SIP/VoIP model)

JREX106-CB



Explosion Proof Telephone, Hotline, without keypad, Yellow color(other colours on demand)

Housed in a weatherproof GRP(Glass fibre-reinforced polyester) enclosure, IP67 rating

Order Code

- JREX106-CB-AL (Analog model)
- JREX106-CB-SIP (SIP/VoIP model)

JREX106-A01-HB



Explosion Proof Telephone, Full keypad, Orange color(other colours on demand), with door cover, with external Ex junction box, Ex Horn, Ex Beacon.

Housed in a weatherproof cast aluminium enclosure, IP66~IP67

Order Code

- JREX106-A01-HB-AL (Analog model)
- JREX106-A01-HB-SIP (SIP/VoIP model)

JREX106-HB



Explosion Proof Telephone, Stainless steel full keypad(20 keys), Orange color(other colours on demand), with LCD display

Housed in a weatherproof GRP(Glass fibre-reinforced polyester) enclosure, IP67 rating, with external Ex junction box, Ex Horn, Ex Beacon.

Order Code

- JREX106-HB-AL (Analog model)
- JREX106-HB-SIP (SIP/VoIP model)

JR201-FK



Handset Telephone, Full metal keypad(12keys), Gray color(other colour on demand) cold-rolled steel body, Unit size: 247*130*133(mm)

Housed in a anti-vandal Cold-rolled steel enclosure, wall mounting type

Order Code (for SUS body, \$25 added, Volume control keypad \$10 added)

- JR201-FK-AL (Analog model)
- JR201-FK-SIP (SIP/VoIP model)
- JR201-FK-4G (4G model)

JR201-FK-VC



Handset Telephone, Full metal keypad(12keys), Brushed Stainless steel body, with volume control button, Unit size:247*130*133(mm)

Housed in a anti-vandal SUS enclosure, wall mounting type

Order Code

- JR201-FK-VC-AL (Analog model)
- JR201-FK-VC-SIP (SIP/VoIP model)
- JR201-FK-VC-4G (4G model)

JR202-FK



Handset Telephone, Full metal keypad(12keys), Gray color(other colour on demand), Cold-rolled steel body, Unit size:240*100*113(mm)

Housed in a anti-vandal Cold-rolled steel enclosure, wall mounting type

Order Code

- JR202-FK-AL (Analog model)
- JR202-FK-SIP (SIP/VoIP model)
- JR202-FK-4G (4G model)

JR202-CB


Handset Telephone, CB(Hotline)No keypad, Gray color(other colour on demand), Cold-rolled steel body, Unit size:240*100*113(mm)

Housed in a anti-vandal Cold-rolled steel enclosure, wall mounting type

Order Code

- JR202-CB-AL (Analog model)
- JR202-CB-SIP (SIP/VoIP model)
- JR202-CB-4G (4G model)

JR204-FK


Handset Telephone, Full metal Keypad (16 keys), Red color(other colour on demand), LCD display, Cold-rolled steel body, Unit size:250*160*123(mm)

Housed in a anti-vandal cold-rolled steel enclosure, wall mounting type

Order Code

- JR204-FK-AL (Analog model)
- JR204-FK-SIP (SIP/VoIP model)
- JR204-FK-4G (4G model)

JR205-FK


Handset Telephone, Full metal Keypad (16 keys), Brushed Stainless steel body, Unit size:300*130*113(mm)

Housed in a anti-vandal brushed stainless steel enclosure, wall mounting type

Order Code

- JR205-FK-AL (Analog model)
- JR205-FK -SIP (SIP/VoIP model)
- JR205-FK -4G (4G model)

JR206-FK


Handset Telephone, Full metal keypad(12keys), Red color(other colour on demand), Cold-rolled steel body, Unit size: 248*185*133(mm)

Housed in a anti-vandal cold-rolled steel enclosure, wall mounting type

Order Code

- JR206-FK-AL (Analog model)
- JR206-FK-SIP (SIP/VoIP model)
- JR206-FK-4G (4G model)

JR207-FK


Handset Telephone, Full metal keypad(16 keys), Red color(other colour on demand), Cold-rolled steel body, Unit size:248 *195 *132.6(mm)

Housed in a anti-vandal cold-rolled steel enclosure, wall-mounting type

Order Code

- JR207-FK-AL (Analog model)
- JR207-FK-SIP (SIP/VoIP model)
- JR207-FK-4G (4G model)

JR208-FK


Handset Telephone, Full metal keypad(12keys), Brushed Stainless steel body, Unit size:280*190*126(mm)

Housed in a anti-vandal SUS enclosure, flush mounting type

Order Code

- JR208-FK-AL (Analog model)
- JR208-FK-SIP (SIP/VoIP model)
- JR208-FK -4G (4G model)

JR208-CB


Handset Telephone, CB (hot line), Brushed Stainless steel body, Unit size:280*190*126(mm)

Housed in a anti-vandal SUS enclosure, flush mounting type

Order Code

- JR208-CB-AL (Analog model)
- JR208-CB-SIP (SIP/VoIP model)
- JR208-CB-4G (4G model)

JR210-1B


Handset Telephone, One button for speed dial, Cold-rolled steel body, Red color(other colour on demand), Unit size:300*180*161(mm)

Housed in a anti-vandal cold-rolled steel enclosure, wall-mounting

Order Code

- JR210-1B-AL (Analog model)
- JR210-1B-SIP (SIP/VoIP model)
- JR210-1B-4G (4G model)

JR211-FK



Handset Telephone, Full Keypad (12 keys), Brushed stainless steel body, Unit size:250*120*160(mm)

Housed in a anti-vandal SUS enclosure, Desk mounting type

Order Code

- JR211-FK-AL (Analog model)
- JR211-FK-SIP (SIP/VoIP model)
- JR211-FK-4G (4G model)

JR211-CB



Handset Telephone, CB (hot line), Cold-rolled steel body, Red color (other colours on demand), Unit size:250*120 *160(mm)

Housed in a anti-vandal cold-rolled steel enclosure, Desk mounting type

Order Code

- JR211-CB-AL (Analog model)
- JR211-CB -SIP (SIP/VoIP model)
- JR211-CB -4G (4G model)

JR212-FK



Handset Telephone, Full keypad, Brushed Stainless steel body, With volume control button and LCD display, Unit size:283*127*134(mm)

Housed in a weatherproof, anti-vandal metal enclosure, wall mounting type

Order Code

- JR212-FK-AL (Analog model)
- JR212-FK-SIP (SIP/VoIP model)
- JR212-FK-4G (4G model)

JR301-SC



Emergency Telephone, Hands-free operation, 1 Button, Autodial, Cold-rolled steel enclosure and stainless steel front panel, Unit size:220*150*50(mm)

Housed in a weatherproof, , Stainless Steel Panel, designed for Wall -mounting

Order Code

- JR301-SC-AL (Analog model)
- JR301-SC-SIP (SIP/VoIP model)
- JR301-SC-4G (4G model)

JR301-2B



Emergency Telephone, Hands-free operation, 2 Buttons, Autodial, Cold-rolled steel enclosure and stainless steel front panel, Unit size:220*150*50(mm)

Housed in a weatherproof, Stainless Steel Panel, Designed for Wall-mounting

Order Code

- JR301-2B-AL (Analog model)
- JR301-2B-SIP (SIP/VoIP model)
- JR301-2B-4G (4G model)

JR301-SC-IW



Emergency Telephone, Hands-free operation, 1Button, Autodial, Brushed stainless steel body, Unit size:216*146*40(mm)

Housed in a weatherproof, SUS enclosure, Designed for Flush-mounting

Order Code

- JR301-SC-IW-AL (Analog model)
- JR301-SC-IW-SIP (SIP/VoIP model)
- JR301-SC-IW-4G (4G model)

JR301-2B-IW



Emergency Telephone, Hands-free operation, 2 Buttons, Autodial, Brushed stainless steel body, Unit size:216*146*40(mm)

Housed in a weatherproof, SUS enclosure, Designed for Flush-mounting

Order Code

- JR301-2B-IW-AL (Analog model)
- JR301-2B-IW-SIP (SIP/VoIP model)
- JR301-2B-IW-4G (4G model)

JR302-SC



Emergency Telephone, Hands-free operation, 1Button, Autodial, Brushed stainless steel body, Unit size:210*140*40(mm)

Housed in a weatherproof, SUS enclosure, Designed for Wall-mounting

Order Code

- JR302-SC-AL (Analog model)
- JR302-SC-SIP (SIP/VoIP model)
- JR302-SC-4G (4G model)

JR305-SC



Emergency Telephone, Hands-free operation, 1 Button, Autodial, Cold-rolled steel enclosure and stainless steel front panel, Unit size:230*160*80(mm)

Housed in a CRS enclosure and SUS panel, wall-mounting or post mounting

Order Code

- JR305-SC-AL (Analog model)
- JR305-SC-SIP (SIP/VoIP model)
- JR305-SC-4G (4G model)

JR306-SC



Emergency Telephone, Hands-free operation, 1Button, Cold-rolled steel body, Yellow Color(other colour on demand), Unit size:300 *180 *120(mm)

Housed in a anti-vandal metal enclosure, wall-mounting or post mounting

Order Code

- JR306-SC-AL (Analog model)
- JR306-SC-SIP (SIP/VoIP model)
- JR306-SC-4G (4G model)

JR308-FK



Emergency Telephone, Full metal keypad(12keys), Brushed stainless steel body, Unit size:220*160*50(mm)

Housed in a weatherproof, SUS enclosure, Designed for wall-mounting

Order Code

- JR308-FK-AL (Analog model)
- JR308-FK-SIP (SIP/VoIP model)
- JR308-FK-4G (4G model)

JR313-SC



Emergency Telephone, 1 Button, Autodial, Cold-rolled steel body, Red color(other colour on demand) Unit size:200*140 *50(mm)

Housed in a anti-vandal cold-rolled steel enclosure, wall-mounting.

Order Code

- JR313-SC-AL (Analog model)
- JR313-SC-SIP (SIP/VoIP model)
- JR313-SC-4G (4G model)

JR313-2B



Emergency Telephone, 2 Button, Autodial, Cold-rolled steel body, Red color(other colour on demand) Unit size:200*140 *50(mm)

Housed in a anti-vandal cold-rolled steel enclosure, wall -mounting

Order Code

- JR313-2B-AL (Analog model)
- JR313-2B-SIP (SIP/VoIP model)
- JR313-2B-4G (4G model)

JR314-SC



Emergency Telephone, 1 Button, Autodial, Flush Mounting, Red color(other colour on demand) Unit size:190 *154 *40(mm)

Housed in a anti-vandal cold-rolled steel enclosure, flush-mounting

Order Code

- JR314-SC-AL (Analog model)
- JR314-SC-SIP (SIP/VoIP model)
- JR314-SC-4G (4G model)

JR505-SC



Emergency Elevator Telephone, Brushed stainless steel body, 1 Button, Autodial, Unit size:135 *75 *25 (mm)

Housed in a anti-vandal SUS enclosure, Designed for wall -mounting

Order Code

- JR505-SC-AL (Analog model)
- JR505-SC-SIP (SIP/VoIP model)
- JR505-SC-4G (4G model)

JR320-SC



Emergency Telephone, Cold-rolled steel body, 1Button, with LED lamp, Blue color(other colour on demand)Unit size:225*285*800(mm)

Housed in a anti-vandal CRS enclosure, wall-mounting or post mounting

Order Code

- JR320-SC-AL (Analog model)
- JR320-SC-SIP (SIP/VoIP model)
- JR320-SC-4G (4G model)

JR321-SC



Emergency Telephone, Cold-rolled steel body, 1Button, Post Mounting, with lamp, Blue color(other colour on demand)

Housed in a anti-vandal CRS enclosure, Standing along-mounting

Order Code

- JR321-SC-AL (Analog model)
- JR321-SC-SIP (SIP/VoIP model)
- JR321-SC-4G (4G model)

JR321-SC-SP



Emergency Telephone, 1 Button, Autodial, Post Mounting, with lamp, solar panel and rechargeable lithium battery, Blue color(other colour on demand)

Housed in a anti-vandal CRS enclosure, Designed for Stand along-mounting

Order Code

- JR321-SC-AL (Analog model) 40W+13AH
- JR321-SC-SP-SIP (SIP/VoIP model) 40W+13AH
- JR321-SC-SP-4G (4G model) 40W+13AH

JR330-SC



Emergency Telephone, 1 Button, Wall Mounting, with lock key for open the door, Orange color(other colour on demand)Unit size:530 *280*200(mm)

Housed in a anti-vandal CRS enclosure, wall –mounting or post mounting

Order Code

- JR330-SC-AL (Analog model)
- JR330-SC-SIP (SIP/VoIP model)
- JR330-SC-4G (4G model)

JR316-4B



Industrial Intercom, 4 Buttons, Suitable for outdoor application, Orange color(other colour on demand), Unit size:400*200*130(mm)

Housed in a anti-vandal CRS enclosure, Designed for Column-mounting

Order Code

- JR316-4B-AL (Analog model)
- JR316-4B -SIP (SIP/VoIP model)
- JR316-4B -4G (4G model)

JR306-SC-SP



Emergency Telephone, 1Button, with LED light and solar panel and rechargeable lithium battery, Orange color (other colour on demand)
 Housed in a weatherproof, anti-vandal cold-rolled steel enclosure, Designed for Column-mounting

Order Code

- JR306-SC-SP-SIP (SIP/VoIP model) 40W 13AH 3days
- JR306-SC-SP-4G (4G model) 40W 6AH 14days

JR315-SC-P



Emergency Help Point, 2Buttons, Autodial, with built-in induction loop

Housed in a weatherproof, anti-vandal SUS enclosure, Column-mounting

Order Code

- JR315-SC-P-AL (Analog model)
- JR315-SC-P-SIP (SIP/VoIP model)
- JR315-SC-P-4G (4G model)

JR309-FK



Emergency Telephone, Full flat metal keypad(12keys)Brushed stainless steel body, Unit size:240 *150 *40(mm)

Housed in a anti-vandal SUS enclosure, Designed for flush-mounting

Order Code

- JR309-FK-AL (Analog model)
- JR309-FK-SIP (SIP/VoIP model)
- JR309-FK-4G (4G model)

JR303-SC



Emergency Help Point, Brushed stainless steel body, 1 Button, Wall Mounting
 Unit size:210 *140 *40(mm)

Housed in a weatherproof, SUS enclosure, wall-mounting

Order Code

- JR303-SC-AL (Analog model)
- JR303-SC-SIP (SIP/VoIP model)
- JR303-SC-4G (4G model)

JR303-2B



Emergency Help Point, SUS body, 2 Buttons, Unit size:210 *140 *40(mm)

Housed in a weatherproof, SUS enclosure, Designed for wall-mounting

Order Code

- JR303-2B-AL (Analog model)
- JR303-2B-SIP (SIP/VoIP model)

JR315-SC



Emergency Video Help Point, Brushed stainless steel body, 2 Buttons, with built-in induction loop, Unit size:300*60*650(mm)

Housed in a weatherproof, SUS enclosure, wall-mounting or Pillar mounting

Order Code

- JR315-SC-AL (Analog model)
- JR315-SC-SIP (SIP/VoIP model)
- JR315-SC-SIP with camera (SIP/VoIP model)

Emergency Telephone Pillar

JR-TP-01



Emergency Telephone Pillar, painted for outdoor use.

Mechanical characteristics:

Sleek and harmonious design free of sharp edges Prepared for the containment of auxiliary circuits

Material:Made of cold rolled steel, painted for outdoor using.It can be manufactured in stainless steel SUS304/SUS316 on demand.

Colour:yellow(other colour on demand)

Weight:20kg Dimensions(mm):1600 x 200 x 200 mm

Fixing:on floor

JR-TP-02



Emergency Telephone Pillar, painted for outdoor use.

Mechanical characteristics:

Sleek and harmonious design free of sharp edges

Prepared for the containment of auxiliary circuits

Material:Made of cold rolled steel, It can be manufactured in stainless steel SUS304/SUS316 on demand.

Colour:yellow(other colour on demand)

Weight:25kg Dimensions(mm):1600 x 200 x 200 mm

Fixing:on floor

JR-TP-03


Emergency Telephone Pillar, painted for outdoor use. Can choose to add LED lights

Mechanical characteristics:

Sleek and harmonious design free of sharp edges

Prepared for the containment of auxiliary circuits

Material:Made of cold rolled steel, It can be manufactured in stainless steel

SUS304/SUS316 on demand

Colour:Red(other colour on demand)

Weight:30kg Dimensions(mm):1510 x 436 x 306 mm

Fixing:on floor

JR-TP-04


Emergency Telephone Pillar, painted for outdoor use.

Mechanical characteristics:

Sleek and harmonious design free of sharp edges

Prepared for the containment of auxiliary circuits

With Solar panel mounting bracket which is adjustable on multiple directions

Material:Made of cold rolled steel, It can be manufactured in stainless steel

SUS304/SUS316 on demand.

Colour:Orange(other colour on demand)

Weight:45kg Dimensions(mm):2400 x 436 x 306 mm

Fixing:on floor

IP Video Telephone

JR213-FK


IP Video Handset Telephone, Full keypad, armoured cord handset, Brushed Stainless steel body, with built-in Camera, and LCD display. Wall mounted.

Order Code

- JR213-FK-SIP (SIP/VoIP model)

JR213-2B


IP Video Telephone, Hands free operation, Brushed Stainless steel body, Two Call buttons, with built-in Camera, induction loop, and LCD display.wall mounted type.

Order Code

- JR213-2B-SIP (SIP/VoIP model)

JR301-SC-C-IW



IP Video Telephone, Brushed Stainless steel body, Hands free operation, One call button, with built-in Camera, induction loop. Flush mounted type.

Order Code

- JR301-SC-C-IW-SIP (SIP/VoIP model)

JR301-SC-C-OW



IP Video Telephone, Brushed Stainless steel body, Hands free operation, One call button, with built-in Camera, induction loop. Wall mounted type.

Order Code

- JR301-SC-C-OW-SIP (SIP/VoIP model)

JR309-FK-A



Clean Room / Sterile Room Intercom, Brushed stainless steel body, 2 Button, Autodial, Unit size:140 *250 *48.5 (mm)

Housed in a anti-vandal SUS enclosure, Designed for flush -mounting

Order Code

- JR309-FK-A-AL (Analog model)
- JR309-FK-A-SIP (SIP/VoIP model)
- JR309-FK-A-4G (4G model)

JR922-FK-SIP



Control room SIP/VoIP Gooseneck Intercom

Robust housing, constructed of stainless steel

Vandal resistant and rugged keypad

Hands free operation with goose-neck microphone and LCD display

Desk top mounting

Weather proof protection: IP54 to IP65

External power supply or PoE power supply

RJ45 Port for IP connection

CE, FCC, IK10 compliant

JR-TH-01


Acoustic insulation: Noise Attenuation up to 23 dB
 Polyethylene plastic construction (GRP)
 Durable, lightweight, chemical resistant body
 Excellent low temperatures impact properties
 High performance polyurethane acoustic insulation liner, resistant to mildew and rot
 Fire retardant class "0" rating
 Wall or pillar installation
 Can be used both indoors, outdoors and offshore
 Optional colors available upon request
 Weight: 25 kg Dimensions(mm):500 x 680x 780 mm

JR-TH-02


Telephone Booth
 Polyethylene plastic construction
 Durable, lightweight, chemical resistant body
 Excellent low temperatures impact properties
 Can be used both indoors, outdoors and offshore
 Wall or pillar installation
 Optional colors available upon request
 Weight: 20 kg Dimensions(mm):805 x 690x 473 mm

JR-TH-04


Telephone Booth
 Polyethylene plastic construction
 Durable, lightweight, chemical resistant body
 Excellent low temperatures impact properties
 Can be used both indoors, outdoors and offshore
 Wall or pillar installation
 Optional colors available upon request
 Weight: 18kg Dimensions(mm):640 x 580x 260 mm

JR-TH-01-OC


Acoustic insulation: Noise Attenuation up to 23dB. Polyethylene plastic construction (GRP)
 Outer Shell: General Purpose Resin continuous filament mat. Fire Resistance
 Acoustic Insulation: 50mm Tissue faced non hygroscopic sound absorbing cotton
 Insulation Liner: High performance polyurethane acoustic insulation liner
 Apparatus plate: 304 Grade Stainless Steel, 1.5mm thickness
 Mounting Brackets: 304 Grade Stainless Steel, 2mm thickness
 Wall or pillar installation, can be used both indoors, outdoors and offshore
 Optional colors available upon request
 Weight: 35 kg Dimensions (mm): H850*W680* D600 (mm)

JR-TH-12


Acoustic insulation: Noise Attenuation up to 23dB. Polyethylene plastic construction (GRP)

Outer Shell: General Purpose Resin continuous filament mat. Fire Resistance
Acoustic Insulation: 50mm Tissue faced non hygroscopic sound absorbing cotton

Insulation Liner: High performance polyurethane acoustic insulation liner

Apparatus plate: 304 Grade Stainless Steel, 1.5mm thickness

Mounting Brackets: 304 Grade Stainless Steel, 2mm thickness

Wall or pillar installation, can be used both indoors, outdoors and offshore

Optional colors available upon request

Weight: 35 kg Dimensions (mm): H900*W700* D620 (mm)

JR-TH-03A


Full Sized Acoustic booth

Robust metal construction

Contain an inside lamp

Fancy looking and modern

Noise reduction with door Up to 35dB

Noise reduction without door Up to 25dB

Optional colors and dimension available upon request

Weight: 300 kg Dimensions(mm):1000 x 1000x 2125 mm

JR-TH-08


Full Sized Acoustic booth

Robust GRP (Fiberglass Reinforce plastic) construction

Contain an inside lamp

Fancy looking and modern

Noise reduction with door Up to 38dB

Noise reduction without door Up to 25dB

Optional colors and dimension available upon request

Weight: 300 kg Dimensions(mm):1000 x 1000x 2125 mm

JR-MP-09

ATEX/IECEX 5G POC walkie talkie phone

Standard 8+256G, can be upgraded 12+256G (+US\$90.00), DMR two-way radio function available as an option (+US\$80.00), Covers 400MHz-470MHz, with an option for the VHF band

- 1-100pcs
- 101-300pcs
- 301-500pcs
- 501-1000pcs



SIP Audio/video Intercom

Standard SIP-compliant intercom; Noise-canceling microphone; Built-in 2W speaker
Protection level IP55-IP65

- K20-1 (audio)
- K20-C (with camera)
- K20-2(2 buttons)
- K20-2C (2 buttons with camera)



SIP Audio/video Intercom

Standard SIP-compliant intercom; Noise-canceling microphone; Built-in 2W speaker
Protection level IP55-IP65

- K86-1 (audio)
- K86-C (with camera)
- K86-2(2 buttons)
- K86-2C (2 buttons with camera)



JREX-HSA

ATEX/IECEX Loudspeaker , Impact-resistant engineering plastic and stainless steel 316, IP66-rated; fixed resistance 8 Ω

Order Code

	Stainless Steel	Aluminum Alloy
➤ JREX-HSA-01 (RR: 8 Ω; RW: 15W)		
➤ JREX-HSA-02 (RR: 8 Ω; RW: 20W)		
➤ JREX-HSA-03 (RR: 8 Ω; RW: 25W)		
➤ JREX-HSA-04 (RR: 8 Ω; RW: 30W)		
➤ JREX-HSA-05 (RR: 8 Ω; RW: 35W)		



JREX-HSA-A

ATEX/IECEX Loudspeaker 35W, Impact-resistant engineering plastic and stainless steel 316, IP66-rated; JREX-HSA-A-AL: constant pressure AC70V-110V

Order Code

	Stainless Steel	Aluminum Alloy
➤ JREX-HSA-A-AL		
➤ JREX-HSA-A-SIP		

JRSP-SIP-01



SIP Speaker, robust engineering plastics construction, built-in 25 W Class D amplifier, Power over Ethernet (PoE) power supply

Order Code

➤ JRSP-SIP-01 (SIP model)

NEW

JREX-WL-01



JREX-WL-01 (Explosion-proof Warning Light)

With LED long-on flashing, rotating and xenon flashing functions

Aluminum Alloy:

Stainless Steel:

NEW

JREX-WL-02



JREX-WL-02 (Explosion-proof Audible and Visual Alarm)

With LED long-on flashing, rotating and xenon flashing functions

Sound and light integrated structure design

Aluminum Alloy:

Stainless Steel:

NEW

JR-WL-01



JR-WL-01 (Warning Light)

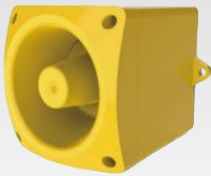
With LED long-on flashing, rotating and xenon flashing functions

ABS Material IP66

NEW**JR-WL-02****JR-WL-02 (Audible and Visual Alarm)**

With LED long-on flashing, rotating and xenon flashing functions
Sound and light integrated structure design

ABS Material IP66

NEW**JR-W-01****JR-W-01 Speaker 10W, IP66, ABS****Soter 900**

Hotel Telephone, Full keypad (without keypad on demand), Red or white color, Wall-Mounting

Housed in ABS

Order Code

- Soter 900-AL (Analog model)
- Soter 900-SIP (SIP/VoIP model)

Soter 900 3B

Hotel Telephone, 3 memory buttons, Red or white color, Wall-Mounting

Housed in ABS

Order Code

- Soter 900-3B-AL (Analog model)
- Soter 900-3B-SIP (SIP/VoIP model)

Soter 900 CB



Hotel Telephone,Hotline,Red or white color,Wall-Mounting
Housed in ABS
Order Code

- Soter 900-CB-AL (Analog model)
- Soter 900-CB-SIP (SIP/VoIP model)